

Welcome to Neptune class

INFORMATION FOR YEAR 5 PARENTS: September 2020



Staff

- Class teacher: Sophie Harrison
- Support staff in the year group: Michelle and Athena
- Year group leader: Suze Wynne



The recovery curriculum

- Find and address lost learning throughout the year - quizzes, assessments, games
- Rebuild stamina - short burst activities, breaks, slowly build up the amount of work produced
- Mental wellbeing - weekly PSHE sessions, daily mindfulness, ethos of growth mindset, regular opportunities to check in with the teacher (Heads above the water), Trust Box etc
- Routines - daily reminders about social distancing and how to keep ourselves safe, opportunities to discuss, regular hand washing routine, seating arrangements, pencil cases.

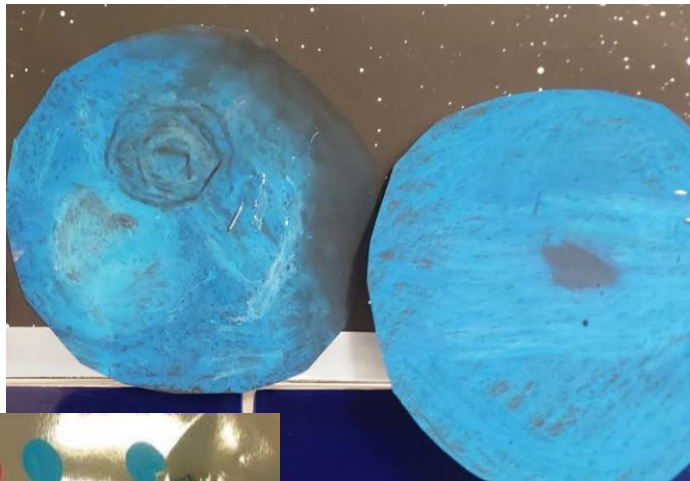


Health and Safety

- Staggered start and end times
- Staggered lunch and playtimes
- One way system for parents and children
- Enhanced cleaning schedule
- Classroom arrangement
- Minimised mixing at all times (staff and children)
- Risk assessments in place
- Lunch will be held in the dining hall
- Children are limited to a school bag, their own named water bottle, home-school books and a packed lunch if they are not eating school dinners
- Children come in to school wearing their **PE kit on PE days - Neptune on Tuesday and Wednesday**
- Home school agreement



Our exciting new learning began like this...



In our Neptune team, we..

- Show kindness to all.
- Cooperate and offer support.
- Actively **listen** and ask **questions**.
- Take responsibility for our actions, learning and environment.
- Demonstrate a **growth mindset**.
- Practice **resilience**.
- Respect all adults equally.
- Be yourself.
- Have fun!

Tuesday 8th September 2020
 LO: To research Neptune.

Success Criteria	Self Assessment
Find facts about Neptune	✓
Select the relevant information	✓
Note key words	✓
Challenge: Categorise the information	✓

What is Neptune?

- furthest from the Sun
- 8th planet away from the Sun
- 4th largest
- made of gas
- nickname 'Gas Giant' & 'Ice Giant'

Why is Neptune blue?

- blue - 'God of the Sea'
- low for 'God's fart gas' - methane
- rings of dust
- 14 moons
- largest Triton

How was Neptune found?

- found 1846
- Le Verrier

NS: Falling into Neptune

- you would see clouds of ice
- you would see flashes of blue
- pitch-black
- lots of lightning
- storm

About Neptune

- Day = 16 hours
- Storm goes 1200 mph
- Most windy planet
- Can not live on Neptune
- -360 degrees
- Hars Secrets
- Dark, cold lonely
- Takes 165 Earth year to go round the Sun ~~once~~ once
- Six rings of dust

Appearance

- diamonds
- methane
- gas
- diamonds
- Screeching Screeching

What is Neptune

Neptune is a planet, it is in our solar system. It is 8th and furthest from the sun. The ice giant of gas giant has it's name as it's made of gas water ammonia and ice. Unlike Earth

Neptune is massive it has a storm the size of Earth.

Appearance

Neptune was named after the Roman god of the Sea. However neptune's name was le verrier.

A aster it's found -er.

Our Learning Quest

- Enquiry based learning approach – Why was there a struggle between the Anglo-Saxons and Vikings, and who won what?
- We have two overarching topics in Year 5. Striving Civilisations and What a Wonderful World.
- In Autumn 1, we explore what happened to the UK once the Romans left and the country was invaded by the Saxons and the Vikings. Before Christmas, we then explore Ancient Islamic Civilisations and then before February half term we will look at the British monarchy, how it has changed over time and investigate some key leaders.
- What a Wonderful World - geography of the UK, rivers, coasts, South America and how to look after our planet.
- Our year group's curriculum coverage can be found on our school website under 'Curriculum' and will be up in week 3.
- There are no trips or visitors confirmed for Autumn 1 but we will re-evaluate according to



Attendance and punctuality

- Children achieve most when they are in school on time every day. We have a whole school target of 97% attendance. A positive and prompt start to the day is important for the whole class in order to feel confident, settled and to achieve their best
- Doors open from **9:00am** and children should be in class very soon thereafter
- Children arriving **9:10 am** time, will be marked late on the register
- If your child is ill or absent due to a dental or medical appointment, please notify the school via ParentMail
- Parents must warn the office in advance of early collections
- Percentages for attendance and punctuality across the school are featured in our new virtual Family assemblies and the school newsroundup



End of the day

- School day ends at **3:15 pm**
- Please collect your child opposite the allotment area, to the right of the path to the office. To avoid crowding, please only one parent per child. As parents, please stand next to the allotments and your child will come to you.
- There will be no after school enrichment opportunities for our children in Autumn, but this will be re-evaluated according to government guidance as soon as possible. More information will be given.
- Please communicate through the office if they need to request a more formal meeting with you.
- Wrap around care offered, ParentMail information.



Behaviour for learning

- We have high expectations of children's behaviour in the classroom, when moving around the school and at play and lunchtimes, our policy also includes COVID 19 amendments
- We expect children to show consideration and take responsibility for themselves, others and the environment
- Marvellous Me's will be sent to highlight fantastic behaviour.
- These character traits are summed up in our school values of Respect, Responsibility, Resilience and Co-operation
- Your support is invaluable in ensuring that children know and understand what is expected of them when in school
- We recognise and celebrate positive behaviours wherever they are seen, using them as a model to inspire and share with others



ParentMail

- ParentMail connects the school to parents using mobile technology and enables us to contact you quickly and reliably
- Parents report absences using the App
- Payments for school dinners, school trips and enrichment clubs (when they resume) are easily completed using ParentMail
- Please contact the school office if you are not already connected





School uniform

Grange Park Primary School Uniform

Nursery

- Purple sweatshirt (with logo)
- White polo shirt (with logo)
- Grey joggers (with logo)

Girls

- Purple sweatshirt/cardigan (with logo)
- White polo shirt (with logo)
- Grey pinafore/skirt/trousers (no leggings please)
- Purple and white gingham summer dress
- Grey summer shorts
- Black shoes (strong and flat heeled) or plain black trainers (no logos or colour on trainers)
- White socks
- Grey/black tights

Boys

- Purple sweatshirt (with logo)
- White polo shirt (with logo)
- Grey trousers
- Grey summer shorts
- Black shoes (strong and flat heeled) or Plain black trainers (no logos or colour on trainers)
- Grey/black socks



Please ensure that all items of uniform, PE kit and other belongings are clearly labelled with your child's name.

For health and safety reasons no jewellery should be worn with the exception of religious items, stud earrings and watches. Children must remove all earrings and watches before PE and games lessons. Make-up and nail polish are not permitted.

School uniform



PE Kit

- Black shorts
- White PE T-shirt (with logo)
- Plimsoles or trainers (not studded please and separate to the shoes worn during the day)
- Grey winter sweatshirt (with logo)
- Grey winter joggers (with logo)
- Light mac in sac (with logo)

Other

- Purple fleece and/or reversible coat (with logo)
- Purple woolly hat and baseball cap (with logo)
- Purple/white/black/grey hair ribbons/bobbles/hairbands and hijabs
- Wellingtons/boots in wet or snowy weather (to be removed when children enter the school building)
- Purple PE bag (with logo)
- Purple book bag (with logo)
- Purple rucksack - small and large available (with logo)

Please ensure that all items of uniform, PE kit and other belongings are clearly labelled with your child's name.

For health and safety reasons no jewellery should be worn with the exception of religious items, stud earrings and watches. Children must remove all earrings and watches before PE and games lessons. Make-up and nail polish are not permitted.

Home learning

- Using Google Classroom
- Short but regular homework:
 - Grammar and punctuation
 - Spellings - will be using a range of programs including Forms and games
 - Maths - Timestable Rockstar and/or My Maths
 - Reading - daily (Home School book) - banded and reading for pleasure opportunities
- By the end of Year 4 the children should know all of their times tables and corresponding division facts. This year, we will be ensuring that this is embedded and increase the speed of recall.
- Half termly Learning Quest project set 21st September, handed in on 16th October
- Additional resources, such as spelling overviews, can be found under the 'Curriculum' tab on the school's website



Home school books

- Reading is such a powerful activity and we love it!
- Reading for Fluency - 1 session per week where the children will be reading from their Reading Hub/banded book. When listened to by an adult, this will be noted in the Home School book
- Whole Class Reading - 3 sessions per week where the children will have an opportunity to explore a range of books and develop their comprehension skills
- Reading Hub - usually we would have a session in the Reading Hub each week. Currently choosing books from the class library and a selection of books from our Library Box.
- Recommended Reads - a list of good reading books appropriate for Year 5 children can be found on the school's website under the 'Curriculum' tab
- Children can send in a birthday book to help us to celebrate their special days. We have labels to put inside the book naming the child who donated it. Please speak to us if you want some ideas about which books to buy.



Marvellous Me

- Marvellous Me is a great way for staff to share your child's achievements and successes with you and helps you to keep up with what has been happening at school
- You will continue to receive photos of work and events your child has been excited about, plus badges to show particular achievements in class
- If your child is new to the school, you will receive log-in details and information on how to access the App from the school office
- Please use the hi-5 feature to notify me that you've received the notification.



Communication



If you need to communicate something that is **not urgent**:

- Write a note in the Home School Reading Book and ask your child to give it straight to the teacher
- Leave a message with the school office to be passed on, telephone or send an email to office@grangeparkprimaryelt.org

At this time we are not inviting parents into the building, and to keep socially distanced we ask you do not stay behind after pick up.





Healthy eating

- We encourage children to make positive choices about the food they eat
- Caterers: The Pantry
- Your child will be registered with The Pantry: They will be in touch via email. Online pre order for the week ahead by Midday Sunday
- office@thepantrycatering.co.uk
- Children in KS2 are encouraged to bring in raw vegetables, a piece of fruit or a healthy cereal bar for their morning snack
- Younger children are provided with fruit or vegetables by the school



GPPSA

- Our Parents Association, the GPPSA brings the school community together to raise funds for various school projects
- New faces and fresh ideas are always well received and everyone is given a warm welcome
- Meetings are held approximately every half term on a weekday evening
- Fundraising events
- Who are the parent reps for this class?

Class performances

- None at the moment, tbc



Exciting opportunities ahead

- You will shortly receive information about how your child can stand for **school parliament** this year – a fantastic opportunity for our pupils to share their opinions and lead on new initiatives
- Pupils will also be encouraged to volunteer to enhance the skills and learning opportunities of other children, support school wide developments, link with community groups and act as an inspiration to others to do good. Look out for information in the school newsroundup

