

# Welcome to Picasso class

INFORMATION FOR YEAR 6 PARENTS: September 2020





# Staff

- Class teacher(s): Ian Gregory
- Support staff: Emma-Jayne Castle
- Year group leader: Ian Gregory



# The recovery curriculum

- Assessments will be used to discover gaps in the children's learning that will inform our planning.
- We have been in communication with Year 5 teachers and are fully aware of the content that needs to be covered or revisited to ensure the children recover all lost learning.
- PSHE will play a key role in helping children with the transition back to school, building relationships with teachers and peers and understanding the new world that we now live in.
- Children will learn more about the importance of hygiene and social distancing to keep us all safe.
- They will be expected to wash their hands at specific times during the day and will be provided with their own pencil case so that they do not need to share stationery.



# Health and Safety

- Staggered start and end times
- Staggered lunch and playtimes
- One way system for parents and children
- Enhanced cleaning schedule
- Classroom arrangement
- Minimised mixing at all times (staff and children)
- Risk assessments in place
- Lunch will be held in the lunch hall
- Children are limited to a school bag, their own named water bottle, home-school books and a packed lunch if they are not eating school dinners
- Children come in to school wearing their PE kit on PE days (Thursday)
- Home school agreement



# Our exciting new learning began like this....



The children have been hard at work replicating some of Picasso's style of Cubist art and researching in preparation for writing a biography about our class artist.

# Our Learning Quest

We have already looked at:

- How has Picasso influenced art styles today?
- Our class displays show our interpretations of Picasso's styles of art.
- Our Autumn 1 Learning Quest topic is Voyage Across the North Atlantic.
- Parent map emailed at the beginning of each half term and available on the school website under the 'Curriculum' tab.
- There are no trips or visitors confirmed for Autumn 1 but we will re-evaluate according to government guidance thereafter
- Further on in the year we will hopefully have our PGL trip to look forward to!



# Attendance and punctuality

- Children achieve most when they are in school on time every day. We have a whole school target of 97% attendance. A positive and prompt start to the day is important for the whole class in order to feel confident, settled and to achieve their best
- Doors open from **8:45am** and children should be in class very soon thereafter
- Children arriving later than **8:55am**, will be marked late on the register. It is also extremely important that they do not arrive after this time because of the risk of them coming into contact with Year 5 children waiting to start their day
- If your child is ill or absent due to a dental or medical appointment, please notify the school via ParentMail
- Parents must warn the office in advance of early collections
- Percentages for attendance and punctuality across the school are featured in our new virtual Family assemblies and the school news roundup



# End of the day

- School day ends at **3pm**
- Please collect your child from the meeting area near the front gate (only one parent) and ensure that you are standing on either the grassed area or outside the gate, socially distanced
- There will be no after school enrichment opportunities for our children in Autumn, but this will be re-evaluated according to government guidance as soon as possible. More information will be given
- Wrap around care offered, ParentMail information





# Behaviour for learning

- We have high expectations of children's behaviour in the classroom, when moving around the school and at play and lunchtimes, our policy also includes COVID 19 amendments
- We expect children to show consideration and take responsibility for themselves, others and the environment
- These character traits are summed up in our school values of Respect, Responsibility, Resilience and Co-operation
- Your support is invaluable in ensuring that children know and understand what is expected of them when in school
- We recognise and celebrate positive behaviours wherever they are seen, using them as a model to inspire and share with others



# ParentMail

- ParentMail connects the school to parents using mobile technology and enables us to contact you quickly and reliably
- Parents report absences using the App
- Payments for school dinners, school trips and enrichment clubs (when they resume) are easily completed using ParentMail
- Please contact the school office if you are not already connected





# School uniform

## Grange Park Primary School Uniform

### Nursery

- Purple sweatshirt (with logo)
- White polo shirt (with logo)
- Grey joggers (with logo)

### Girls

- Purple sweatshirt/cardigan (with logo)
- White polo shirt (with logo)
- Grey pinafore/skirt/trousers (no leggings please)
- Purple and white gingham summer dress
- Grey summer shorts
- Black shoes (strong and flat heeled) or plain black trainers (no logos or colour on trainers)
- White socks
- Grey/black tights

### Boys

- Purple sweatshirt (with logo)
- White polo shirt (with logo)
- Grey trousers
- Grey summer shorts
- Black shoes (strong and flat heeled) or Plain black trainers (no logos or colour on trainers)
- Grey/black socks



Please ensure that all items of uniform, PE kit and other belongings are clearly labelled with your child's name.

For health and safety reasons no jewellery should be worn with the exception of religious items, stud earrings and watches. Children must remove all earrings and watches before PE and games lessons. Make-up and nail polish are not permitted.



# School uniform

## PE Kit

- Black shorts
- White PE T-shirt (with logo)
- Plimsoles or trainers (not studded please and separate to the shoes worn during the day)
- Grey winter sweatshirt (with logo)
- Grey winter joggers (with logo)
- Light mac in sac (with logo)

## Other

- Purple fleece and/or reversible coat (with logo)
- Purple woolly hat and baseball cap (with logo)
- Purple/white/black/grey hair ribbons/bobbles/hairbands and hijabs
- Wellingtons/boots in wet or snowy weather (to be removed when children enter the school building)
- Purple PE bag (with logo)
- Purple book bag (with logo)
- Purple rucksack - small and large available (with logo)

Please ensure that all items of uniform, PE kit and other belongings are clearly labelled with your child's name.

For health and safety reasons no jewellery should be worn with the exception of religious items, stud earrings and watches. Children must remove all earrings and watches before PE and games lessons. Make-up and nail polish are not permitted.



# Statutory assessments

## *Years 6 SATs*

Monday 10<sup>th</sup> May - Spelling, punctuation and grammar (SPAG) tests

Tuesday 11<sup>th</sup> May - Reading

Wednesday 12<sup>th</sup> May - Mathematics papers 1 and 2

Thursday 13<sup>th</sup> May - Mathematics paper 3

Scaled Scores – Children need to reach a certain mark for each paper that equates to a scaled score of 100, which is a pass. For more information please visit: <https://www.gov.uk/government/publications/2019-scaled-scores-at-key-stage-2>

We will be sitting mock exams each half term, which were the official SATs papers from 2016, 2017, 2018 and 2019. We analyse the results of these to inform our planning to allow your child to make the most progress so please DO NOT use these as part of your support at home. There are plenty of other resources for them to use for revision. Please ask if you would like any suggestions.



# Home learning

- Google Classroom
- MyMaths will be set each week
- Daily reading: Children choose two books a week which are age/stage appropriate
- Weekly spelling tests: Friday. Complete spelling lists can be found on the school website under the 'Curriculum' tab
- Half termly Learning Quest project will be set on a Friday and children will have a longer time to complete.
- In addition to TTRS and reading, children will be set maths, reading and grammar homework based on the content of the lessons and will be handed in on a Wednesday.



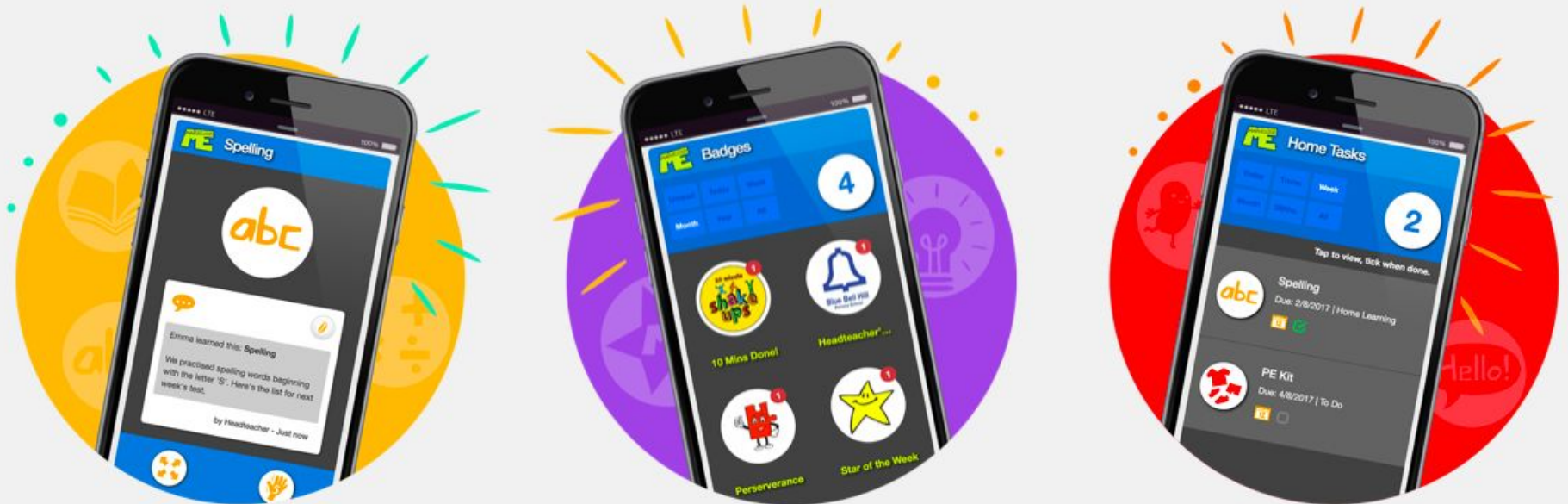
# Home school books

- Reading ideas:
  - **Clockwork** by Phillip Pullman
  - **The Hobbit** by JR Tolkein
  - **Fireweed** by Jill Paton Walsh
  - **River Boy** by Tim Bowler
- Home learning books will be checked each day by the teacher.
- As we are unable to allow children to access the library, they will be able to choose a new book from a selection provided by the librarian.
- Children can send in a birthday book to help us to celebrate their special days. We have labels to put inside the book naming the child who donated it. Please speak to us if you want some ideas about which books to buy.



# Marvellous Me

- Marvellous Me is a great way for staff to share your child's achievements and successes with you and helps you to keep up with what has been happening at school
- You will continue to receive photos of work and events your child has been excited about, plus badges to show particular achievements in class
- If your child is new to the school, you will receive log-in details and information on how to access the App from the school office





# Communication



If you need to communicate something that is **not urgent**:

- Write a note in the Home School Reading Book and ask your child to give it straight to the teacher
- Leave a message with the school office to be passed on, telephone or send an email to [office@grangeparkprimaryelt.org](mailto:office@grangeparkprimaryelt.org)

At this time we are not inviting parents into the building, and to keep socially distanced we ask you do not stay behind after pick up.





# Healthy eating

- We encourage children to make positive choices about the food they eat
- Caterers: The Pantry
- Your child will be registered with The Pantry: They will be in touch via email. Online pre order for the week ahead by Midday Sunday
- [office@thepantrycatering.co.uk](mailto:office@thepantrycatering.co.uk)
- Children in KS2 are encouraged to bring in raw vegetables, a piece of fruit or a healthy cereal bar for their morning snack
- Younger children are provided with fruit or vegetables by the school



# GPPSA

- Our Parents Association, the GPPSA brings the school community together to raise funds for various school projects
- New faces and fresh ideas are always well received and everyone is given a warm welcome
- Meetings are held approximately every half term on a weekday evening
- Fundraising events
- Who are the parent reps for this class?

# Class performances

- None at the moment, tbc



# Exciting opportunities ahead

- You will shortly receive information about how your child can stand for **school parliament** this year – a fantastic opportunity for our pupils to share their opinions and lead on new initiatives
- Pupils will also be encouraged to volunteer to enhance the skills and learning opportunities of other children, support school wide developments, link with community groups and act as an inspiration to others to do good. Look out for information in the school news roundup

