

Plants

Significant Scientist

George Washington Carver



George Washington Carver (1860 - 1943) was an American agricultural scientist and inventor who promoted alternative crops to cotton and methods to prevent soil depletion like crop rotation. This helped farming and the growth of healthy crops.

Key Knowledge

Deciduous trees lose their leaves in the autumn every year. Their leaves are generally broad, flat and have veins running through them.

Evergreen trees have green leaves all year round. Their leaves are generally thick and waxy or have narrow like needles.

Fruit and vegetables are also types of plants.

Common garden flowers are chosen by people to grow and look after.

A wild plant will grow by itself. It does not need to be cared for. If it grows somewhere unwanted, it may be a weed.

Enquiry Skills

Pattern seeking

Research

Sorting and classifying

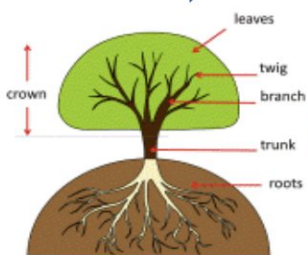
Working Scientifically Skills

Use observations and ideas to suggest answers to questions.

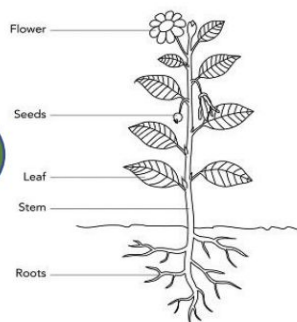
Gather and record data to help in answering questions.

Key Vocabulary

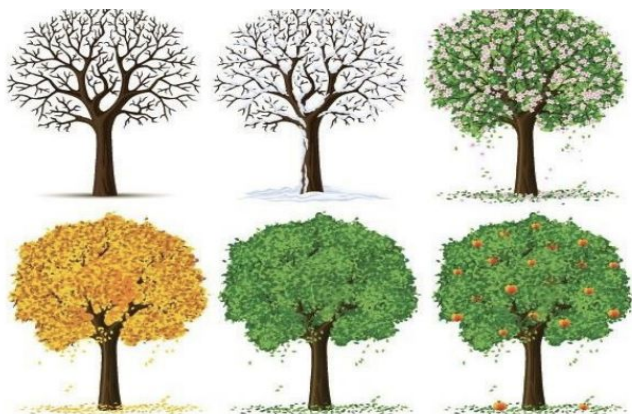
deciduous	A tree that loses its leaves in the autumn every year.
evergreen	A tree or bush which has green leaves all the year round.
tree	A tall plant that has a hard trunk, branches and leaves.
leaf	The parts of a tree or plant that are flat, thin, and usually green.
flower	The part of a plant that is often brightly coloured.
petal	Thin coloured or white parts which form part of the flower.
stem	The upright main stalk of a plant.
root	The part of the plant that grows under the ground.
seed	Small part of a flowering plant that grows into a new plant.
fruit	Fleshy part of a plant that contains seeds or a stone.
trunk	Large main stem of a tree.
branch	Part that grows out from the tree trunk and has leaves, flowers, or fruit growing on it.



Main parts of a tree



Main parts of a plant



Different types of trees and plants		rose	daffodil
oak	horse chestnut		
cherry	hawthorn	daisy	tulip
ash	sycamore		
hazel	holly	buttercup	dandelion