

Welcome to Leopard class

INFORMATION FOR YEAR 4 PARENTS: September 2020





Staff

- Class teacher(s): Michael Snowden and Sylvana Siddique
- Support staff: Semral Orhan
- Year group leader: Lloyd Newey

The recovery curriculum

- Continued assessment of the children's learning to determine lost learning in order to inform planning and adjust approaches to teaching.
- Rebuilding the children's behaviour for learning and develop their stamina through short flashback sessions and progressive approach to produced work
- Awareness of wellbeing and mindfulness of the children, developing their mindset toward life back at school through PSHE sessions, trustbox sessions and discussion opportunities.
- Embed structured routines through timetabling and clear expectations, working alongside social distancing guidance to ensure safe practice.

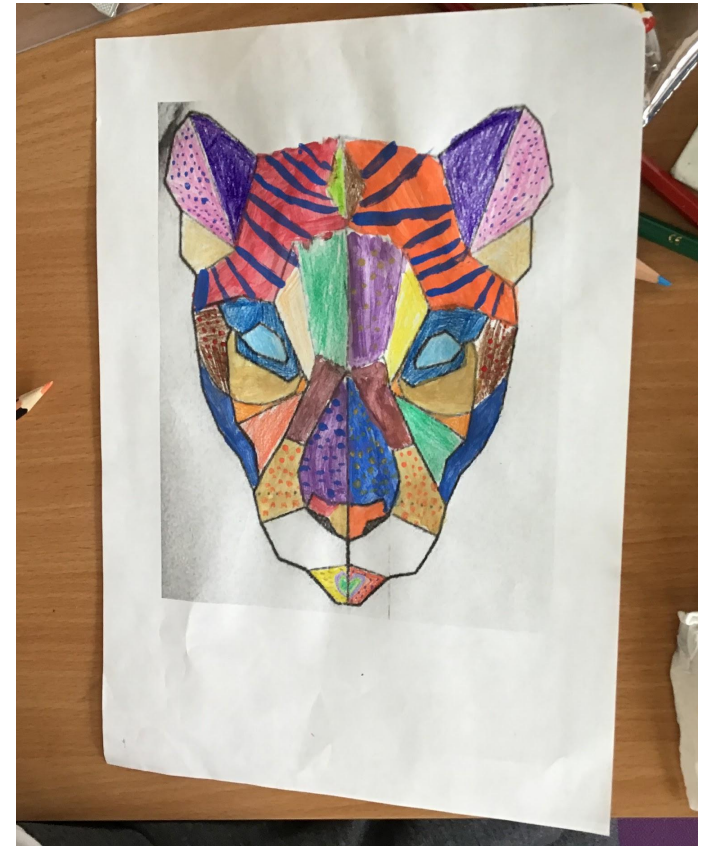


Health and Safety

- Staggered start and end times
- Staggered lunch and playtimes
- One way system for parents and children
- Enhanced cleaning schedule
- Classroom arrangement
- Minimised mixing at all times (staff and children)
- Risk assessments in place
- Lunch will be held in the dining hall
- Children are limited to a school bag, their own named water bottle, home-school books and a packed lunch if they are not eating school dinners
- Children come in to school wearing their PE kit on PE days which for Leopard Class are on Wednesdays and Fridays.
- Home school agreement



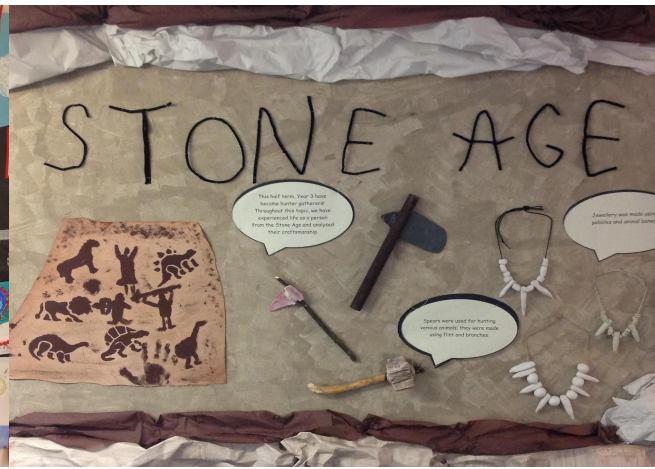
Our exciting new learning began like this...



Our Learning Quest

We have already looked at:

- Enquiry based learning approach related to each classes specific animal.
- This week have worked collaboratively to produce a large piece of artwork inspired by the contrasting colourings of Romero Britto’s mixed media style. Each class has also taken time to establish clear structures and routines within the class in order to maximise the learning for the coming year and ensure a safe working environment is created.
- Our Autumn 1 Learning Quest topic is ‘Groovy Greeks’ where we will be exploring Ancient Greek civilisations, gods, war, democracy and Mythology.
- Parent map emailed at the beginning of each half term and available on the school website under the ‘Curriculum’ tab
- There are no trips or visitors confirmed for Autumn 1 but we will re-evaluate according to government guidance thereafter.
- Further on in the year we also have the Romans, Britain and Europe to look forward to.



Attendance and punctuality

- Children achieve most when they are in school on time every day. We have a whole school target of 97% attendance. A positive and prompt start to the day is important for the whole class in order to feel confident, settled and to achieve their best
- Doors open from **8:30 am** and children should be in class very soon thereafter
- Children arriving after **8:30 am** time, will be marked late on the register
- If your child is ill or absent due to a dental or medical appointment, please notify the school via ParentMail
- Parents must warn the office in advance of early collections
- Percentages for attendance and punctuality across the school are featured in our new virtual Family assemblies and the school newsroundup



End of the day

- School day ends at **2:45pm**
- Please collect your child from the Year 4/6 (bottom) playground (only one parent)
- There will be no after school enrichment opportunities for our children in Autumn, but this will be re-evaluated according to government guidance as soon as possible. More information will be given.
- Wrap around care offered, ParentMail information.



Behaviour for learning

- We have high expectations of children's behaviour in the classroom, when moving around the school and at play and lunchtimes, our policy also includes COVID 19 amendments
- We expect children to show consideration and take responsibility for themselves, others and the environment
- These character traits are summed up in our school values of Respect, Responsibility, Resilience and Co-operation
- Your support is invaluable in ensuring that children know and understand what is expected of them when in school
- We recognise and celebrate positive behaviours wherever they are seen, using them as a model to inspire and share with others



ParentMail

- ParentMail connects the school to parents using mobile technology and enables us to contact you quickly and reliably
- Parents report absences using the App
- Payments for school dinners, school trips and enrichment clubs (when they resume) are easily completed using ParentMail
- Please contact the school office if you are not already connected





School uniform

Grange Park Primary School Uniform

Nursery

- Purple sweatshirt (with logo)
- White polo shirt (with logo)
- Grey joggers (with logo)

Girls

- Purple sweatshirt/cardigan (with logo)
- White polo shirt (with logo)
- Grey pinafore/skirt/trousers (no leggings please)
- Purple and white gingham summer dress
- Grey summer shorts
- Black shoes (strong and flat heeled) or plain black trainers (no logos or colour on trainers)
- White socks
- Grey/black tights

Boys

- Purple sweatshirt (with logo)
- White polo shirt (with logo)
- Grey trousers
- Grey summer shorts
- Black shoes (strong and flat heeled) or Plain black trainers (no logos or colour on trainers)
- Grey/black socks



Please ensure that all items of uniform, PE kit and other belongings are clearly labelled with your child's name.

For health and safety reasons no jewellery should be worn with the exception of religious items, stud earrings and watches. Children must remove all earrings and watches before PE and games lessons. Make-up and nail polish are not permitted.



School uniform



PE Kit

- Black shorts
- White PE T-shirt (with logo)
- Plimsoles or trainers (not studded please and separate to the shoes worn during the day)
- Grey winter sweatshirt (with logo)
- Grey winter joggers (with logo)
- Light mac in sac (with logo)

Other

- Purple fleece and/or reversible coat (with logo)
- Purple woolly hat and baseball cap (with logo)
- Purple/white/black/grey hair ribbons/bobbles/hairbands and hijabs
- Wellingtons/boots in wet or snowy weather (to be removed when children enter the school building)
- Purple PE bag (with logo)
- Purple book bag (with logo)
- Purple rucksack - small and large available (with logo)

Please ensure that all items of uniform, PE kit and other belongings are clearly labelled with your child's name.

For health and safety reasons no jewellery should be worn with the exception of religious items, stud earrings and watches. Children must remove all earrings and watches before PE and games lessons. Make-up and nail polish are not permitted.

Statutory assessments

- Year 4 will be taking the 'National Multiplication Tables Check' in June 2021.
- Children will answer a range of question related to multiplication tables from 1 to 12 during a timed assessment. The assessments are computerised and the school will be using iPads to complete them.



Home learning

- Google classroom will be used to provide short task related to Writing, Reading, Grammar and Maths in order to boost confidence and consolidate the learning in school. Tasks related to other subjects will also be provided as part of the recovery curriculum.
- By the end of Year 4, children need to know all of the times tables and corresponding division facts. This year, children will be completing the National Multiplication Tables Check in June.
- Mymaths will be set each week
- Daily reading: Children choose two books a week which are age/stage appropriate
- Weekly spelling tests will be completed each week. Complete spelling lists can be found on the school website under the 'Curriculum' tab
- Half termly Learning Quest project set 21st September, handed in on October 16th



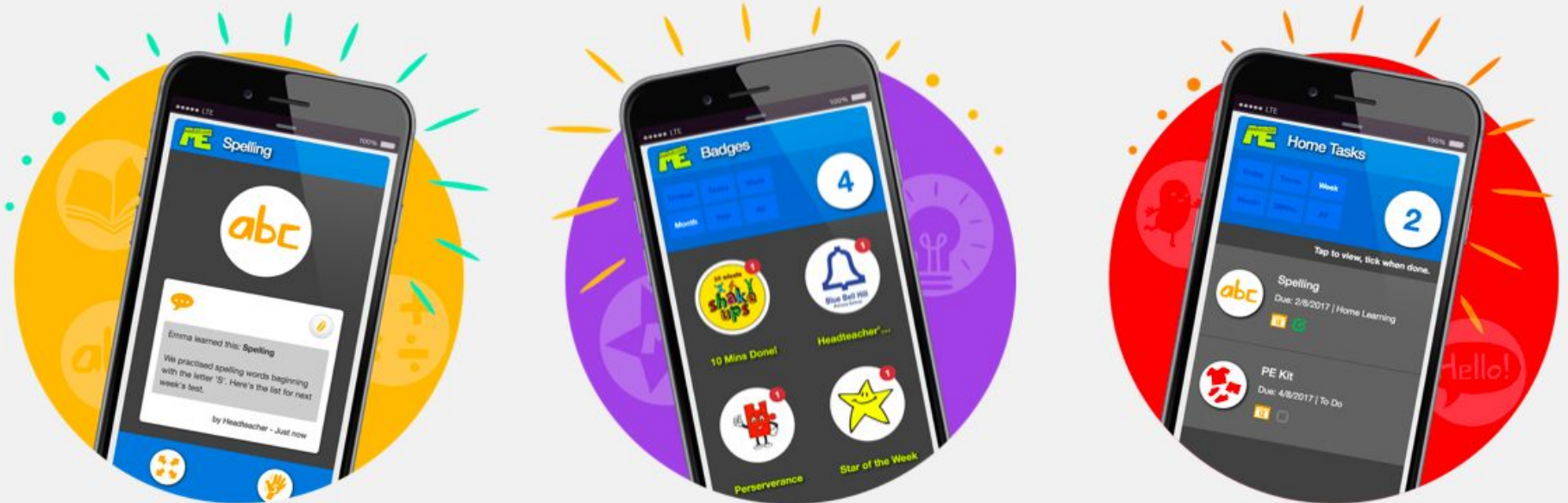
Home school books

- Reading is an essential skills and one that will be actively promoted and celebrated in Year 4.
- Sessions will include reading for fluency, whole class reading and comprehensions sessions to further develop reading skills at school
- The children's reading progress will be continually tracked using the school's book banding system, when listened to by an adult this will be communicated in the home school books.
- Reading Hub - usually we would have a session in the Reading Hub each week. Currently choosing books from the class library and a selection of books from our Library Box.
- Children can send in a birthday book to help us to celebrate their special days. We have labels to put inside the book naming the child who donated it. Please speak to us if you want some ideas about which books to buy.



Marvellous Me

- Marvellous Me is a great way for staff to share your child's achievements and successes with you and helps you to keep up with what has been happening at school
- You will continue to receive photos of work and events your child has been excited about, plus badges to show particular achievements in class
- If your child is new to the school, you will receive log-in details and information on how to access the App from the school office



Communication



If you need to communicate something that is **not urgent**:

- Write a note in the Home School Reading Book and ask your child to give it straight to the teacher
- Leave a message with the school office to be passed on, telephone or send an email to office@grangeparkprimaryelt.org

At this time we are not inviting parents into the building, and to keep socially distanced we ask you do not stay behind after pick up.





Healthy eating

- We encourage children to make positive choices about the food they eat
- Caterers: The Pantry
- Your child will be registered with The Pantry: They will be in touch via email. Online pre order for the week ahead by Midday Sunday
- office@thepantrycatering.co.uk
- Children in KS2 are encouraged to bring in raw vegetables, a piece of fruit or a healthy cereal bar for their morning snack
- Younger children are provided with fruit or vegetables by the school



GPPSA

- Our Parents Association, the GPPSA brings the school community together to raise funds for various school projects
- New faces and fresh ideas are always well received and everyone is given a warm welcome
- Meetings are held approximately every half term on a weekday evening
- Fundraising events

Class performances

- None at the moment, tbc



Exciting opportunities ahead

- You will shortly receive information about how your child can stand for **school parliament** this year – a fantastic opportunity for our pupils to share their opinions and lead on new initiatives
- Pupils will also be encouraged to volunteer to enhance the skills and learning opportunities of other children, support school wide developments, link with community groups and act as an inspiration to others to do good. Look out for information in the school newsroundup

