

Grange Park Primary School Year 2 Summer 1 and 2 Art and Design

Mad for Madagascar: Compositions inspired by the work of Henri Rousseau 1844 - 1910

Key Facts

Henri Rousseau was a French painter born in 1844.

Rousseau served in the army for four years before becoming a customs officer in the suburbs of Paris.

Rousseau's favourite subject was the jungle, although he never actually saw one. He based his scenery on the botanical gardens in Paris and his animals were drawn from guidebooks and zoo leaflets. Some of his subjects he never saw in three dimensions so his paintings have a very flat look to them. Rousseau sometimes grouped animals that would never even have been seen together in nature.

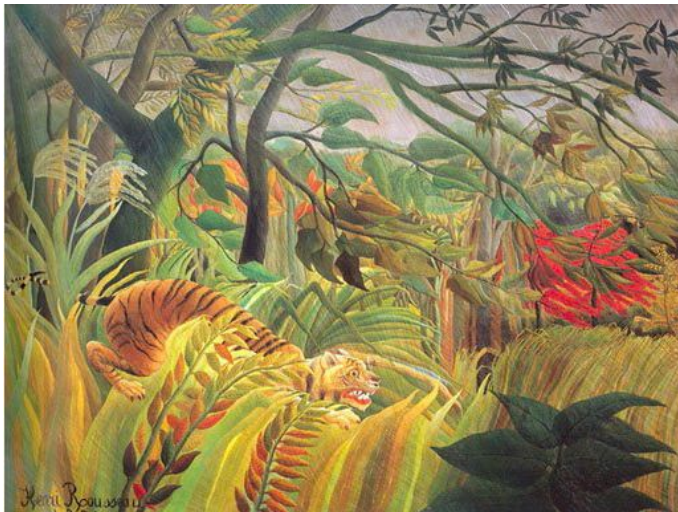
Although traditional artists mocked his style, he became recognised as a self-taught genius.

Henri Rousseau died in Paris in 1910 and his paintings are hung in galleries and museums around the world.

What else was going on in the World?

1845 The Crimean War started in Turkey.

1910 Florence Nightingale died in the same year as Henri Rousseau.



Key Skills

Observational drawing	Draw from real life - first hand observation. Look carefully and draw exactly what is seen. Experiment with a wide range of mark making tools.
Collage techniques	Collect, sort and match different media such as card, paper and fabric. Experiment with cutting, folding and layering to develop an idea and create a final image.
Paint techniques	Experiment with and use a variety of techniques including, naming and using primary colours to create secondary colours and mixing tints and tones to match own observations.
Composition	Think carefully about how elements are placed or arranged to create a final image.
Discuss an artist's work	Begin to think critically about the work of an artist. Be able to talk about choices made in art, likes and dislikes, and how these relate to the work of Henri Rousseau.



Key Vocabulary

composition	Arrangement of visual elements in a painting.
primary colours	Red, yellow and blue – can be mixed together to make any other colour.
secondary colours	Orange, green and purple – can be made by mixing any two primary colours together.
crumple	Crush something so that it becomes creased or wrinkled.
overlay	Cover or layer things on top of each other.
botanical garden	A well kept garden or park which contains a collection of special plants from all over the world, some kept in greenhouses.
customs officer	Person who collects taxes.
smudge	Cause something to become smeared by rubbing it with your finger.

